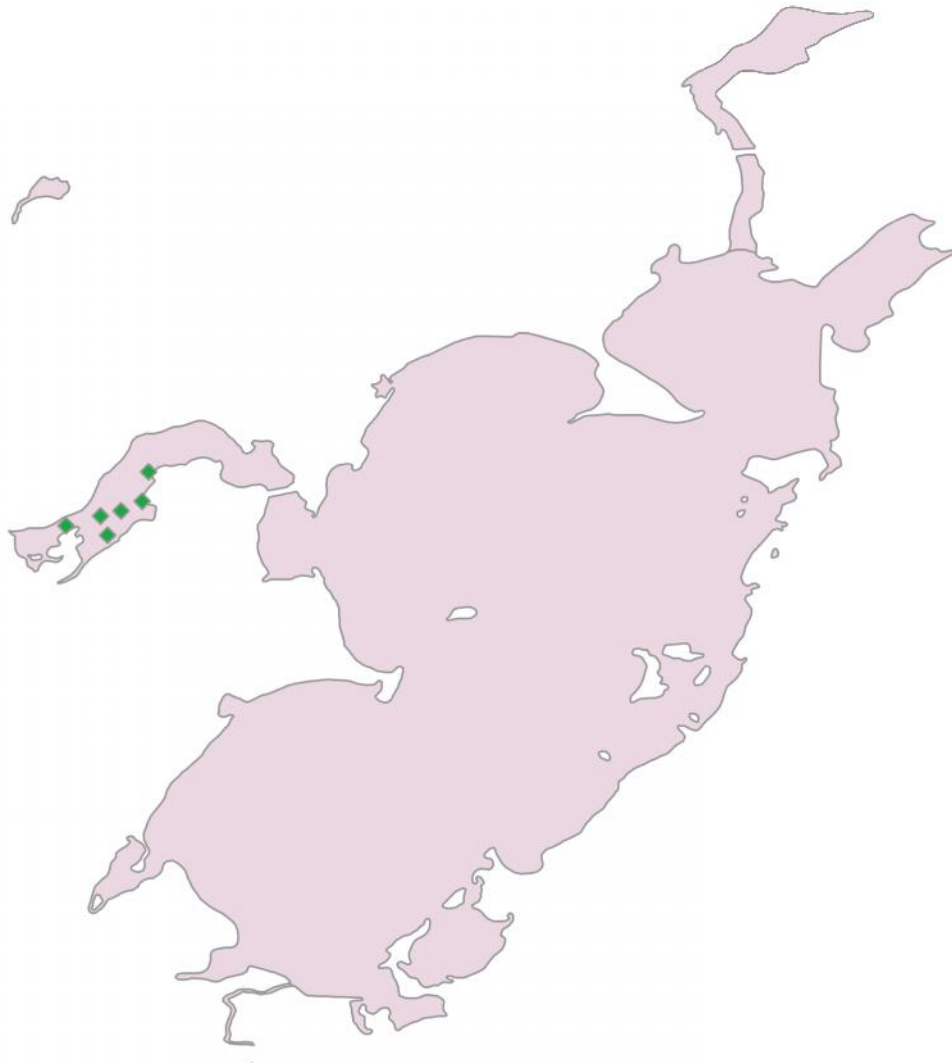


**Solberg Lake  
Vegetation Survey 2011  
Bidens beckii  
Water marigold**

Disappearing Creek 2012  
◆  
Categories: Bidens bec  
◆ 1



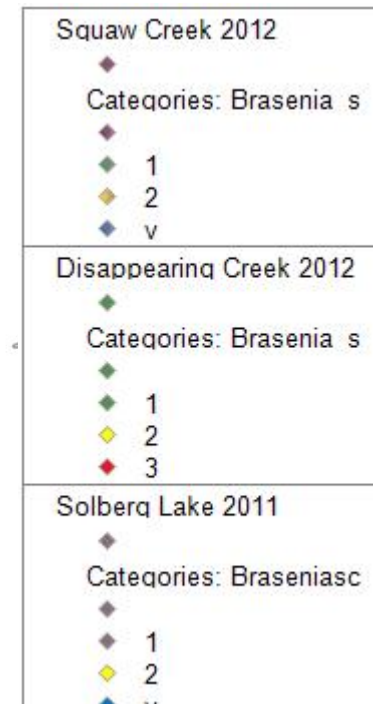
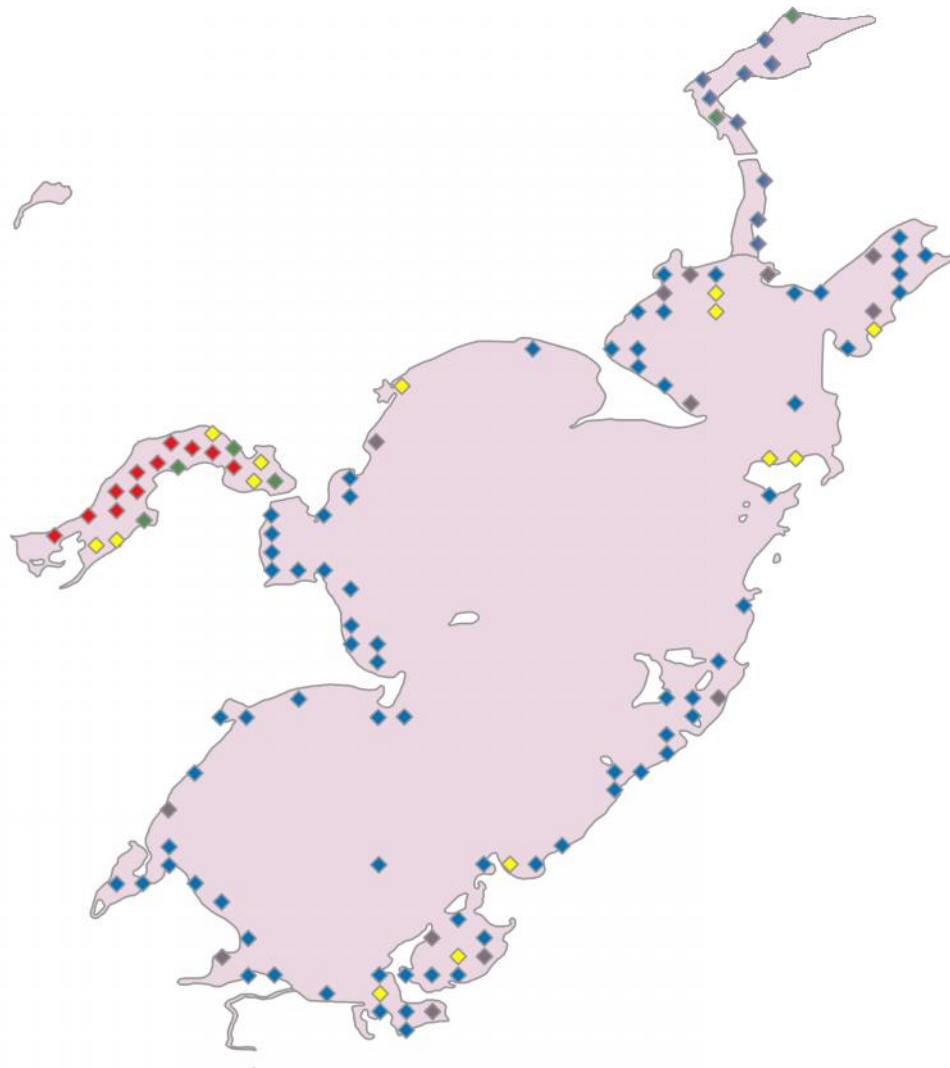
**Rake Density**

- 1 - few plants
- 2 - rake full/single layer of plants
- 3 - rake covered w/plants



Figure 5-1

**Solberg Lake  
Vegetation Survey 2011  
*Brasenia schreberi*  
Watershed**

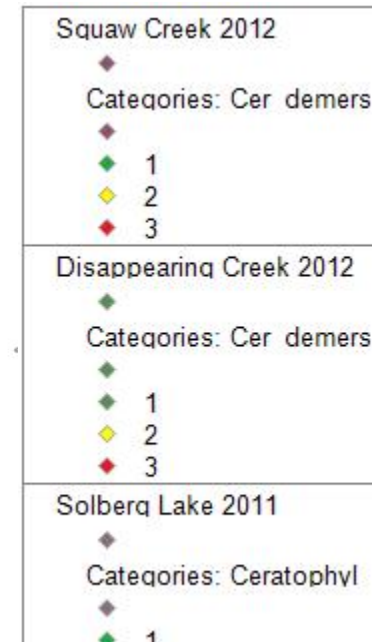
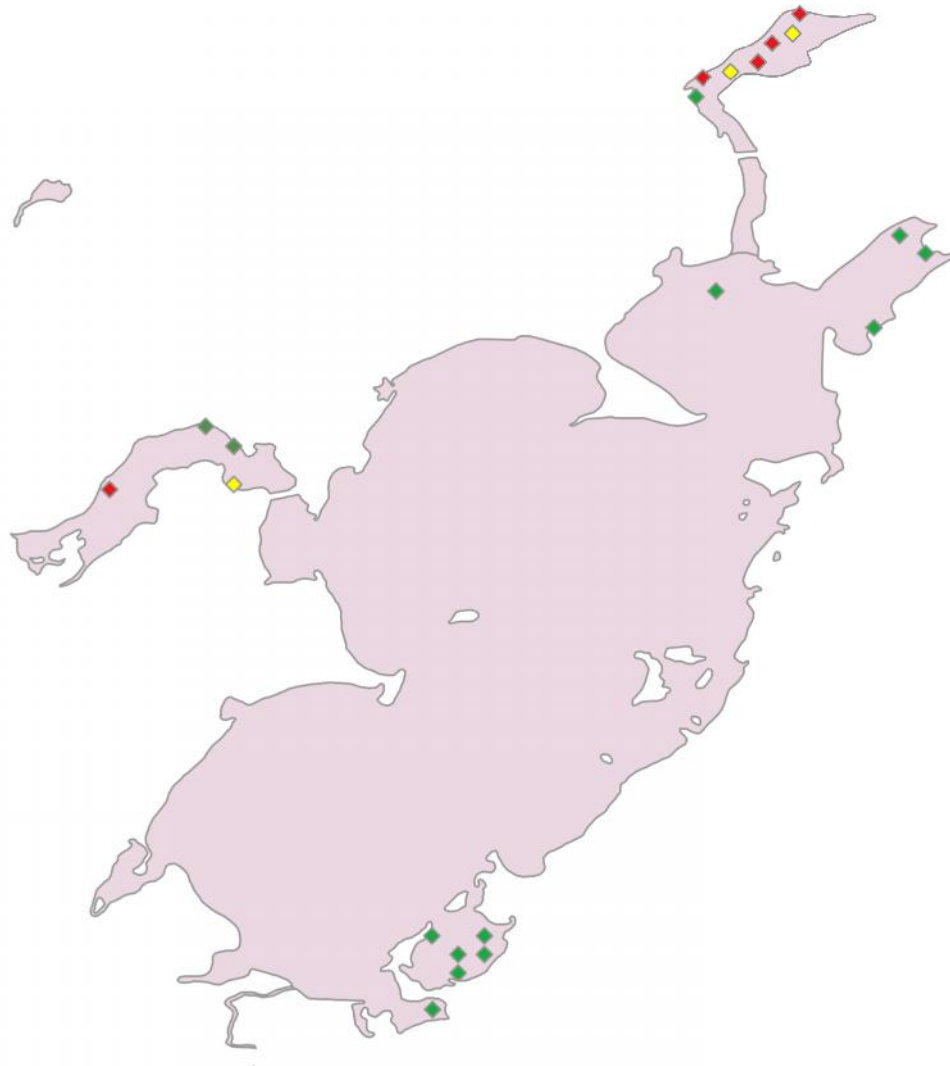


**Rake Density**

- 1 - few plants
- 2 - rake full/single layer of plants
- 3 - rake covered w/plants
- v - visual

Figure 5-2

**Solberg Lake  
Vegetation Survey 2011  
Ceratophyllum demersum  
Coontail**

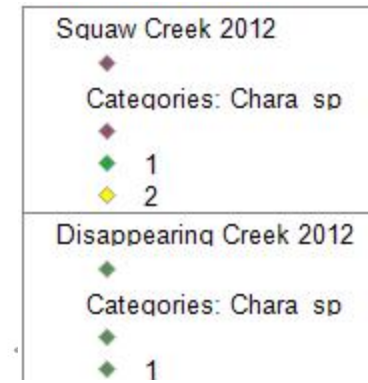
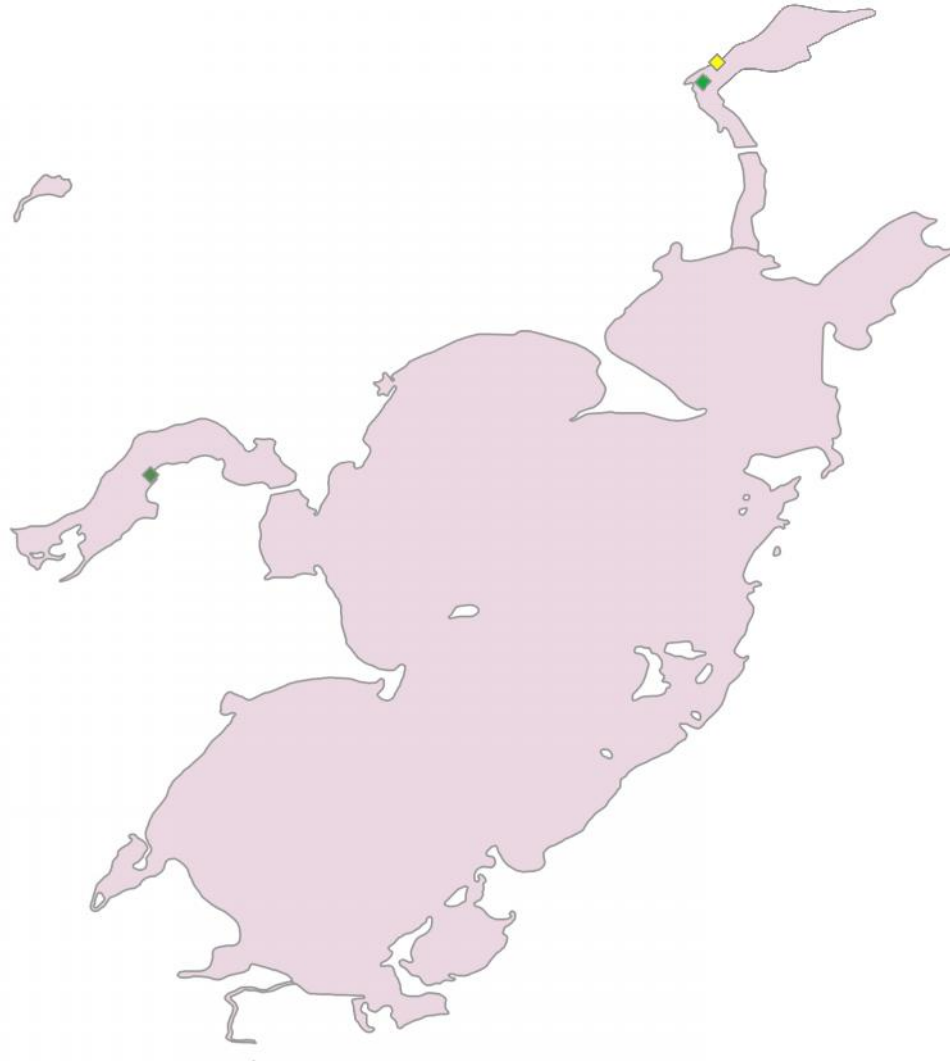


**Rake Density**

- 1 - few plants
- 2 - rake full/single layer of plants
- 3 - rake covered w/plants

Figure 5-3

**Solberg Lake  
Vegetation Survey 2011  
Chara sp  
Muskgrass**

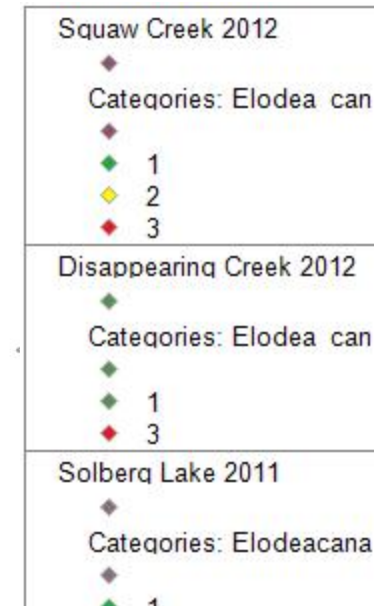
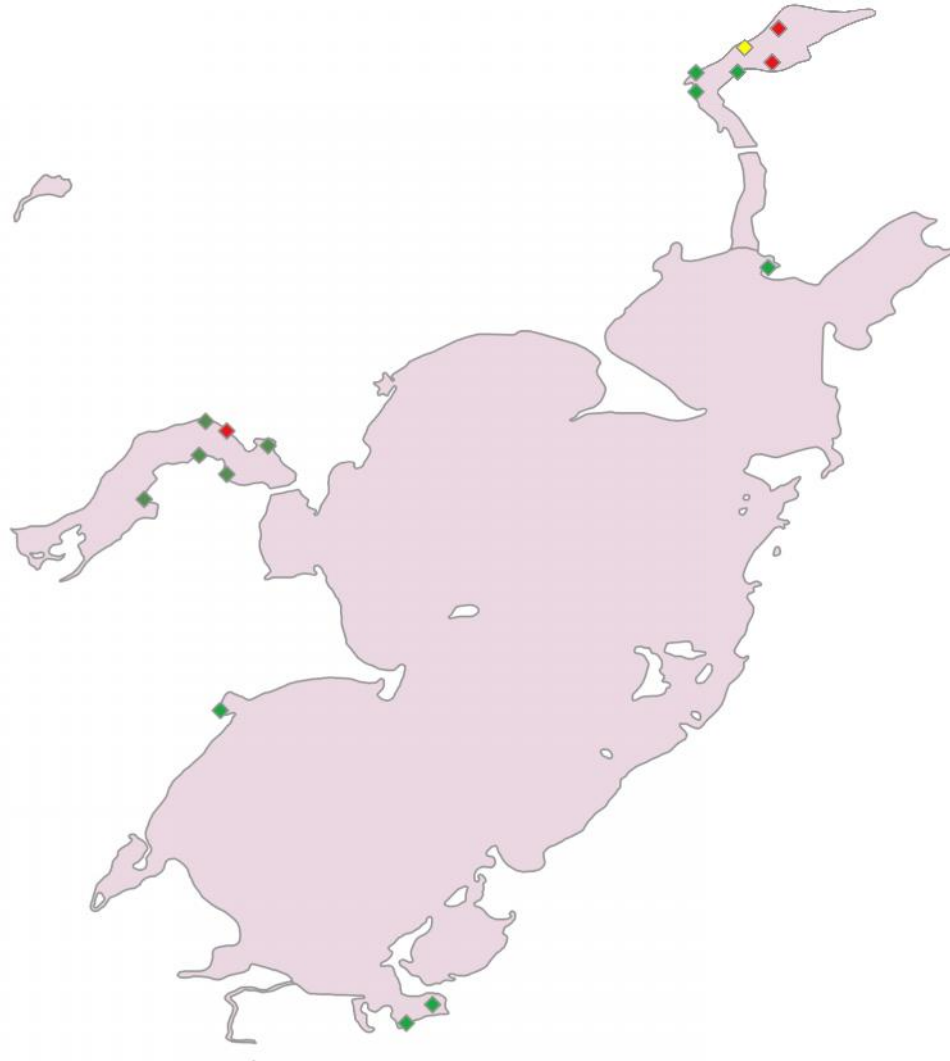


**Rake Density**

- 1 - few plants
- 2 - rake full/single layer of plants
- 3 - rake covered w/plants

Figure 5-4

**Solberg Lake  
Vegetation Survey 2011  
*Elodea canadensis*  
Common waterweed**



**Rake Density**

- 1 - few plants
- 2 - rake full/single layer of plants
- 3 - rake covered w/plants

Figure 5-5

# Solberg Lake Vegetation Survey 2011 Filamentous algae

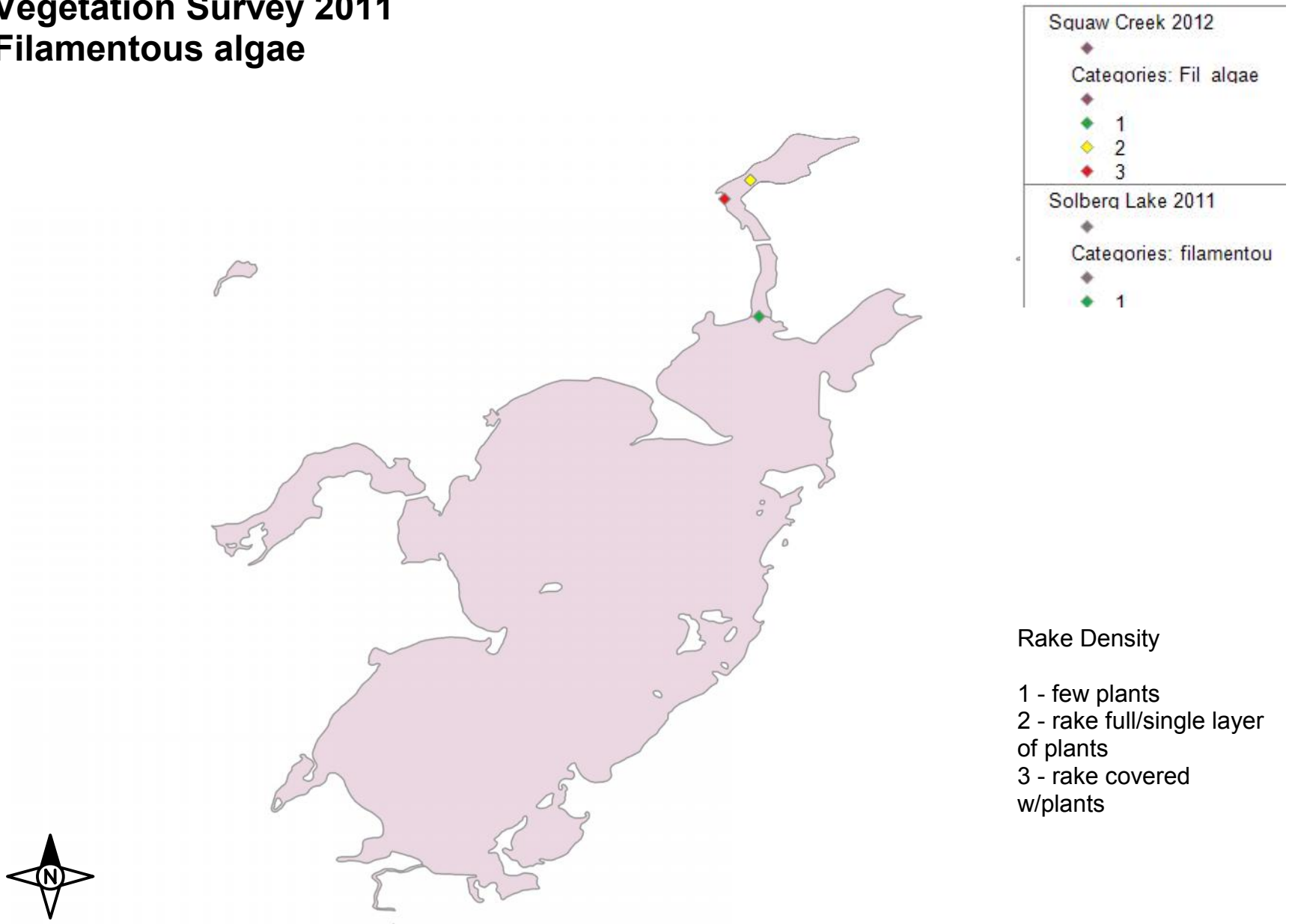
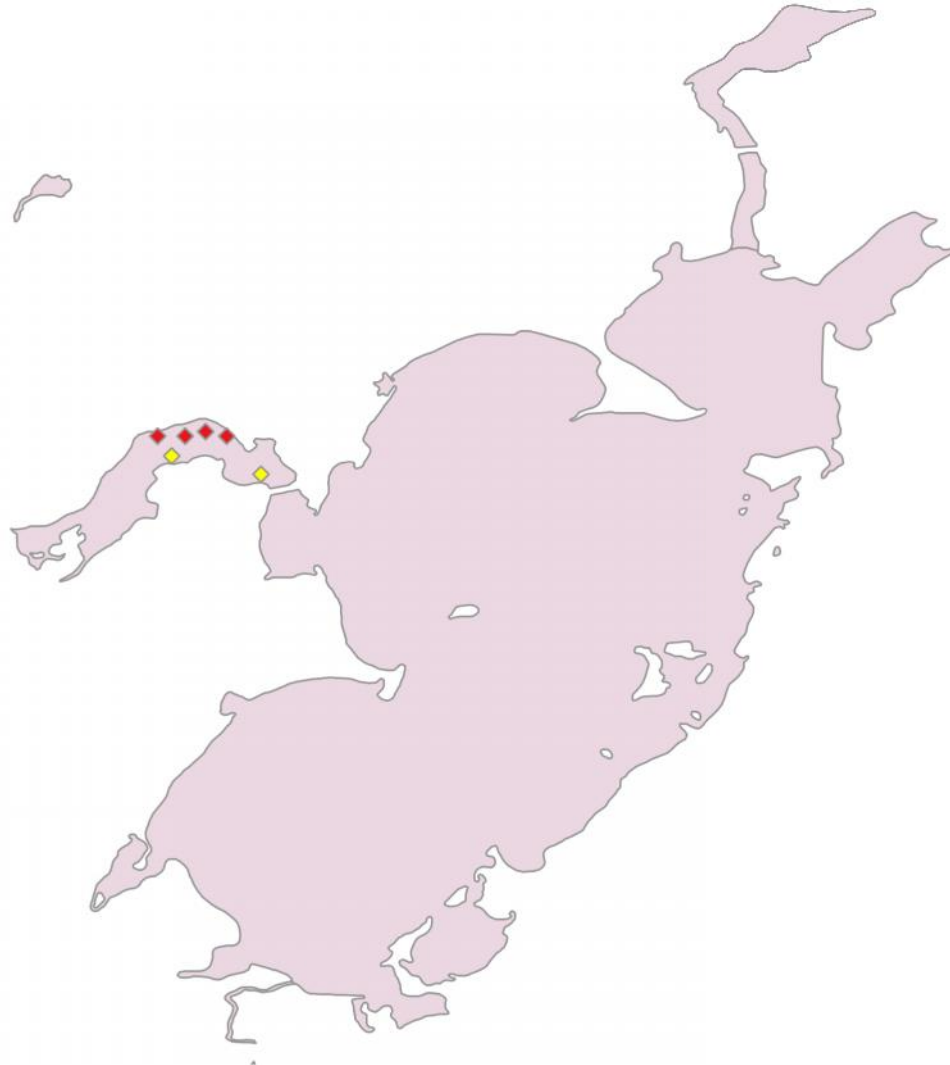
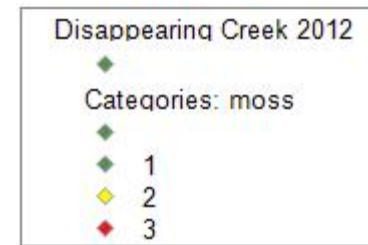


Figure 5-6

# Solberg Lake Vegetation Survey 2011 Aquatic moss



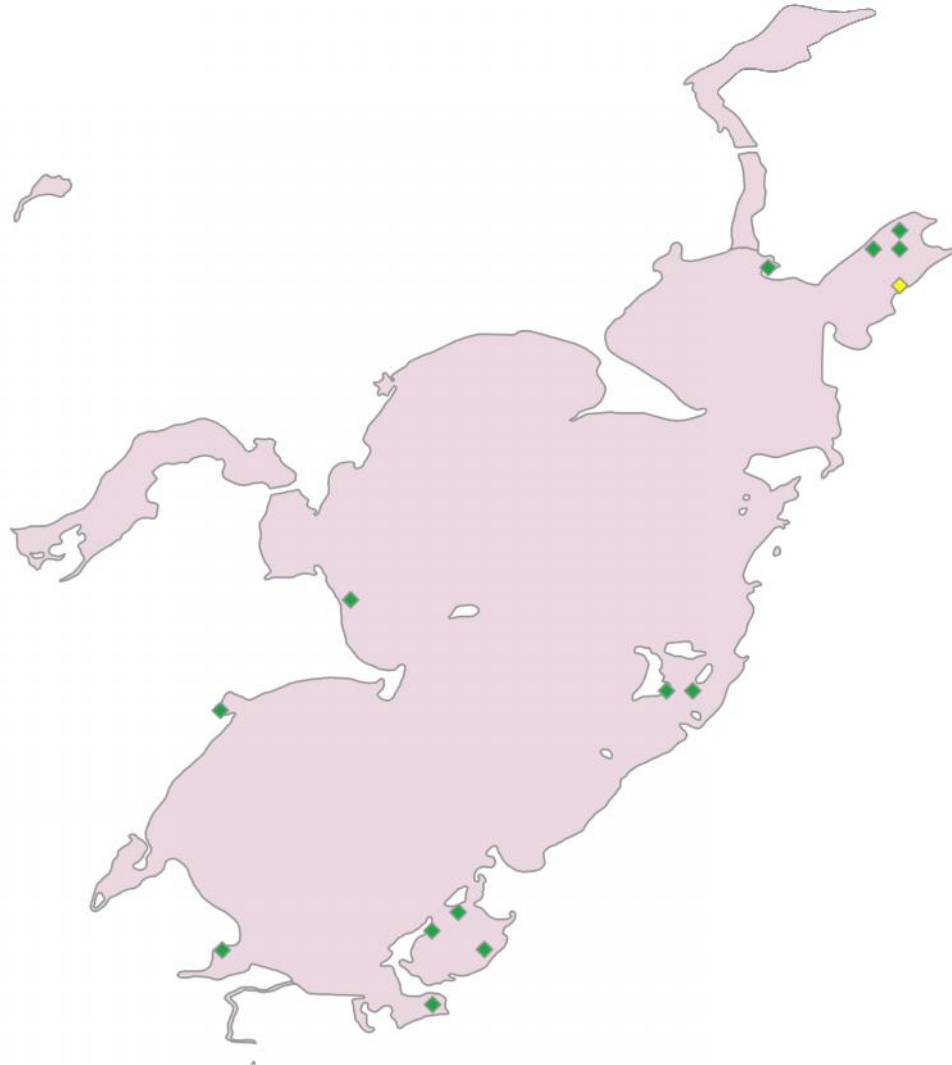
## Rake Density

- 1 - few plants
- 2 - rake full/single layer of plants
- 3 - rake covered w/plants



Figure 5-7

**Solberg Lake  
Vegetation Survey 2011  
Myriophyllum heterophyllum  
Various-leaved watermilfoil**



**Rake Density**

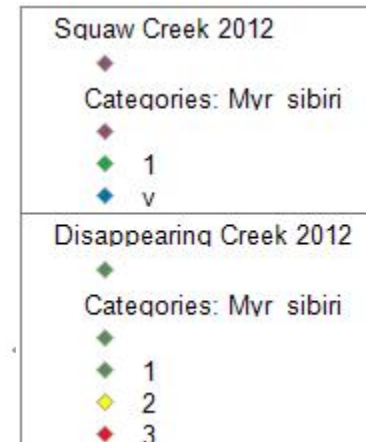
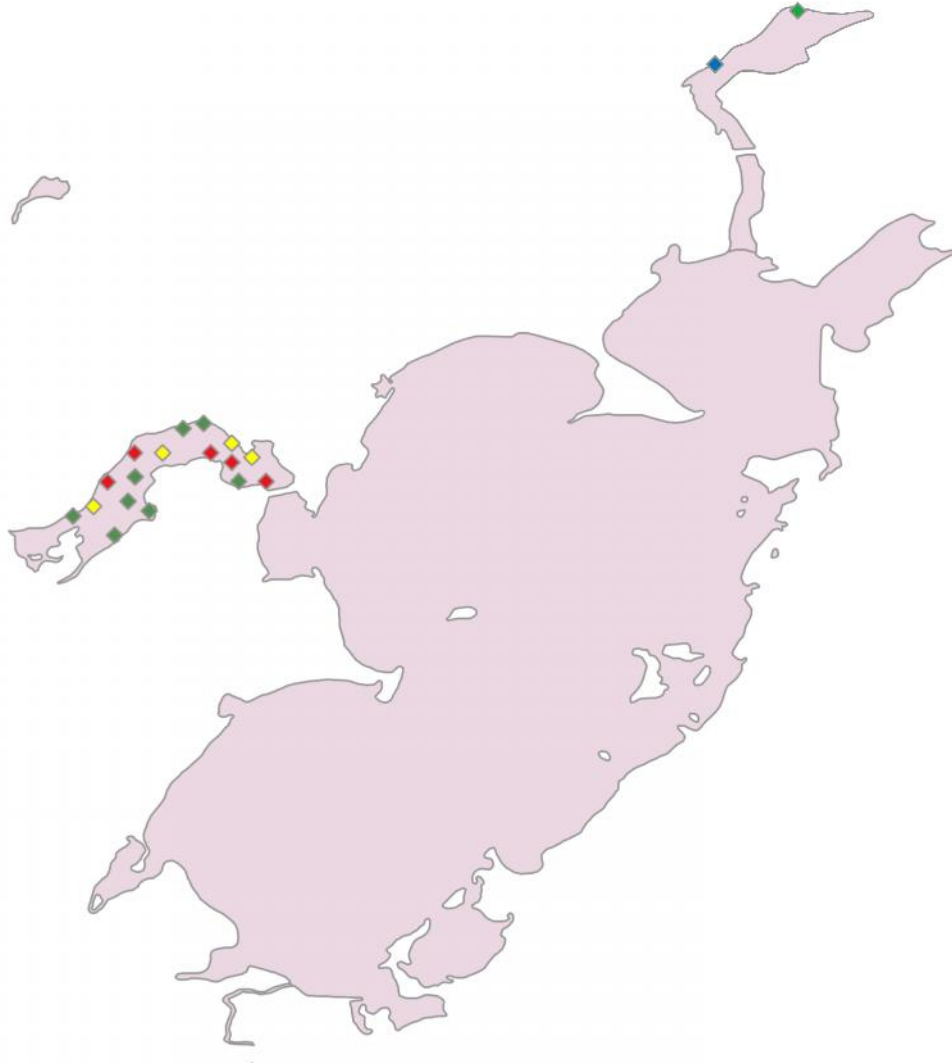
- 1 - few plants
- 2 - rake full/single layer of plants
- 3 - rake covered w/plants



Figure 5-8



**Solberg Lake  
Vegetation Survey 2011  
*Myriophyllum sibiricum*  
Northern watermilfoil**



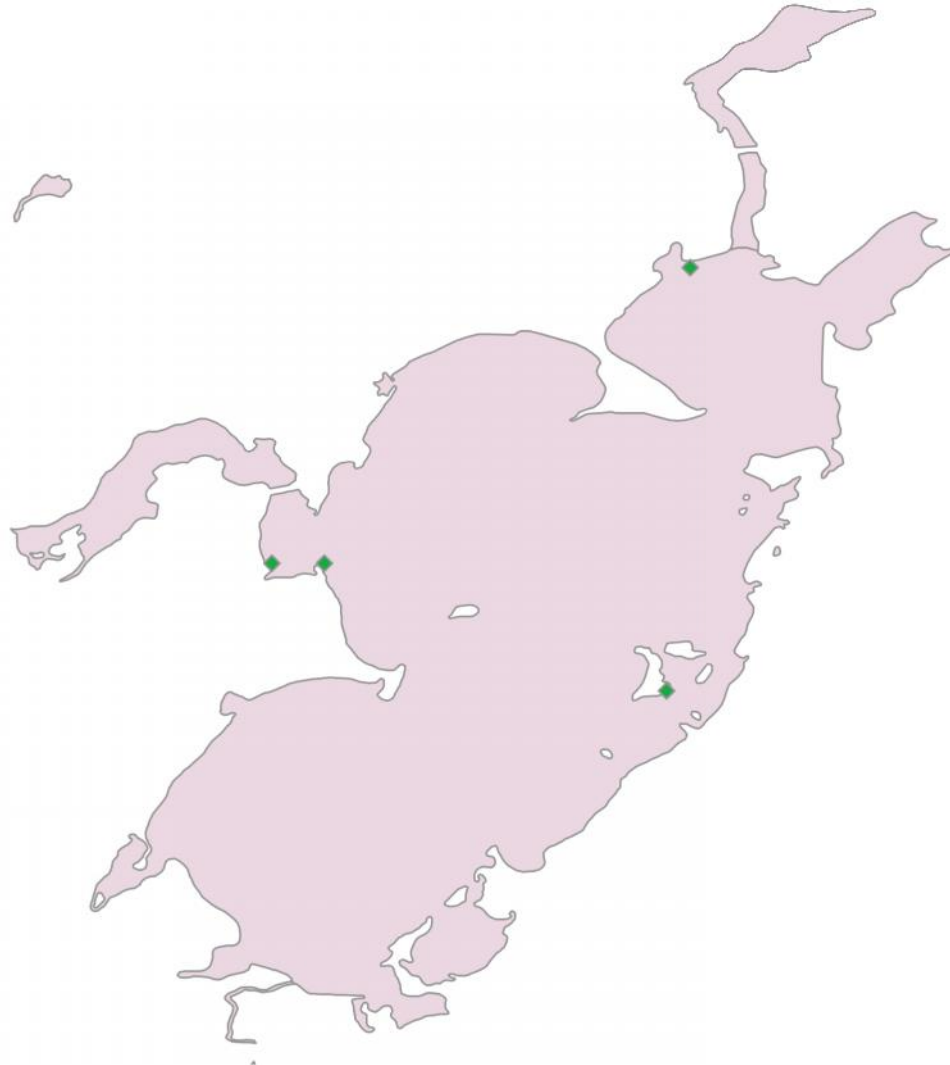
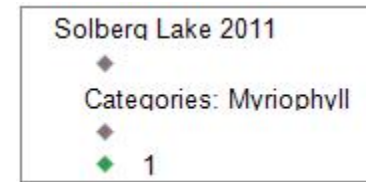
**Rake Density**

- 1 - few plants
- 2 - rake full/single layer of plants
- 3 - rake covered w/plants
- v - visual



Figure 5-9

**Solberg Lake  
Vegetation Survey 2011  
Myriophyllum verticillatum  
Whorled watermilfoil**



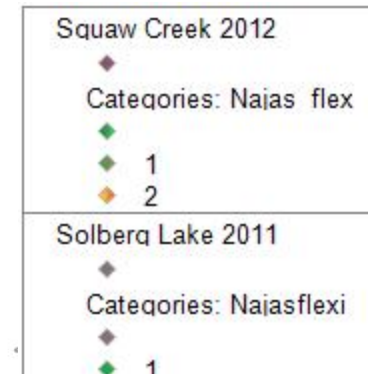
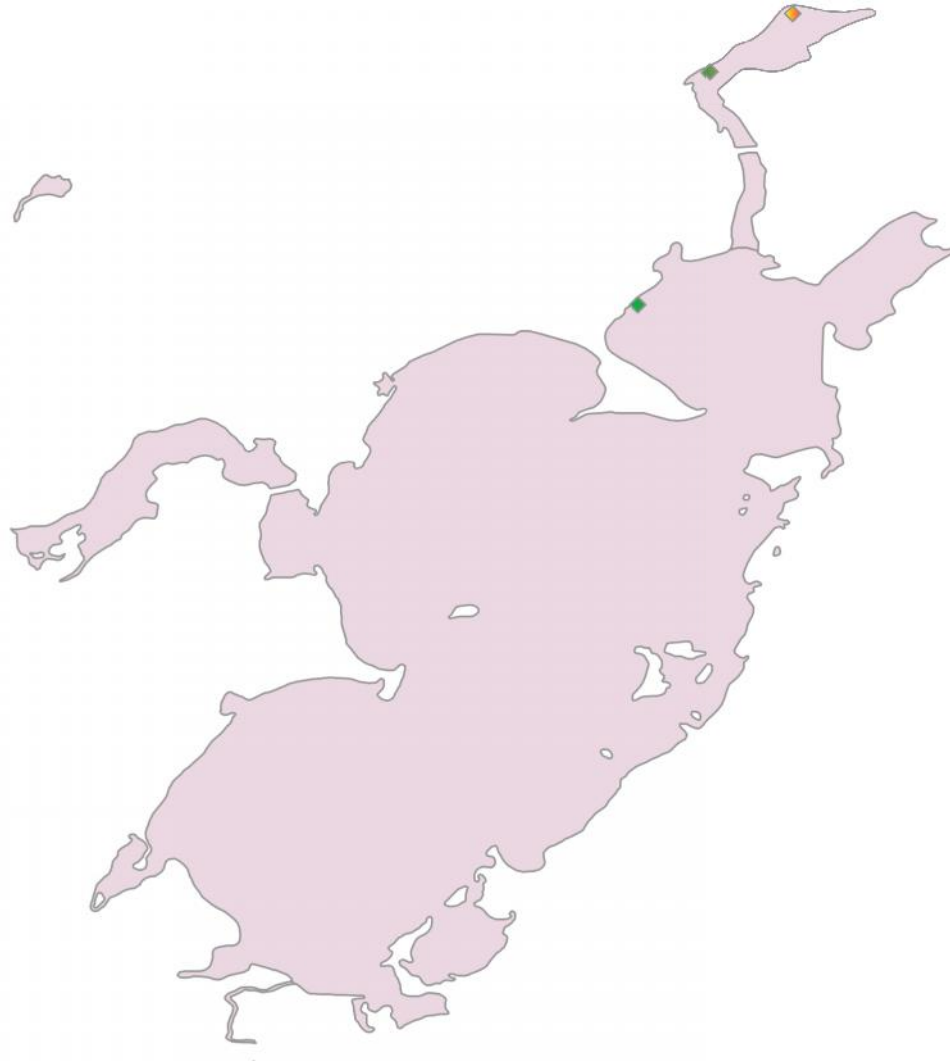
**Rake Density**

- 1 - few plants
- 2 - rake full/single layer of plants
- 3 - rake covered w/plants



Figure 5-10

**Solberg Lake  
Vegetation Survey 2011  
Najas flexilis  
Slender naiad (bushy pondweed)**



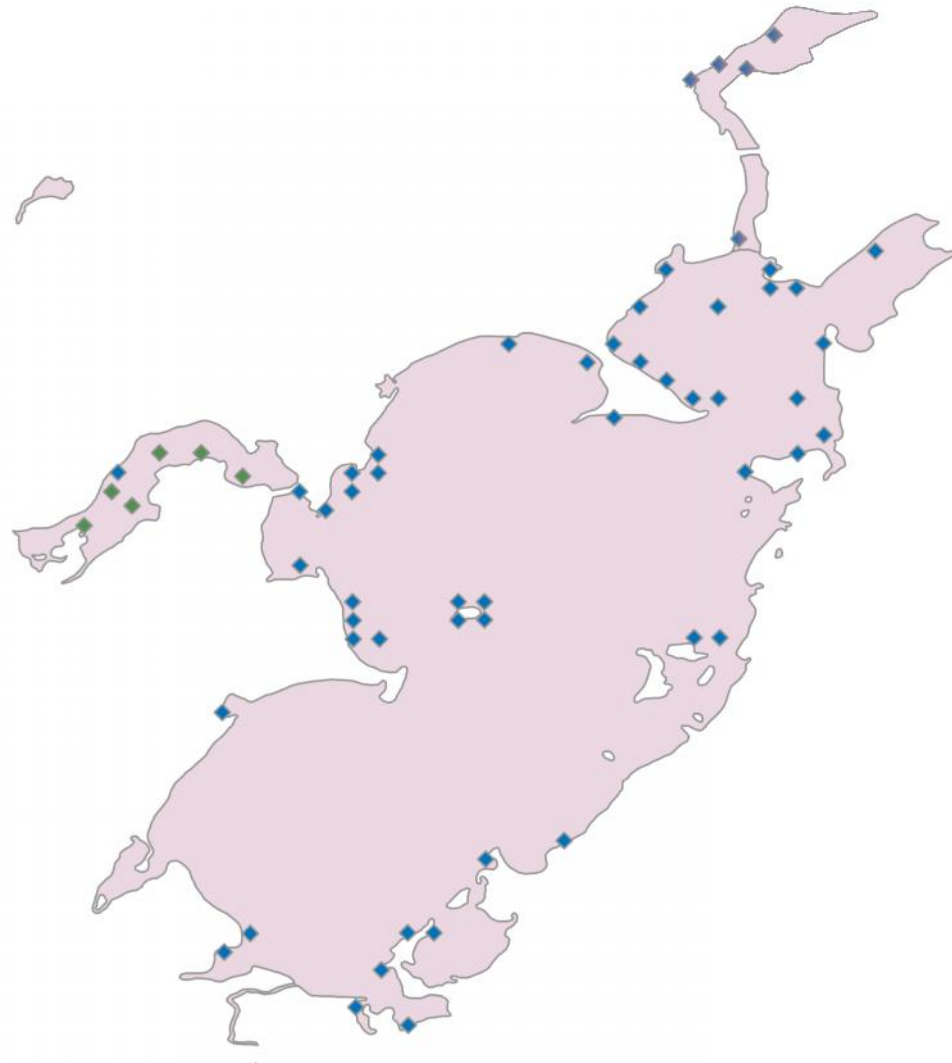
**Rake Density**

- 1 - few plants
- 2 - rake full/single layer of plants
- 3 - rake covered w/plants



Figure 5-11

**Solberg Lake  
Vegetation Survey 2011  
Nuphar variegata  
Spatterdock**

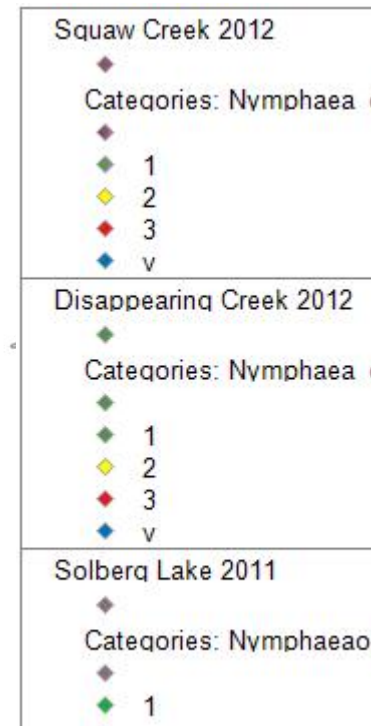
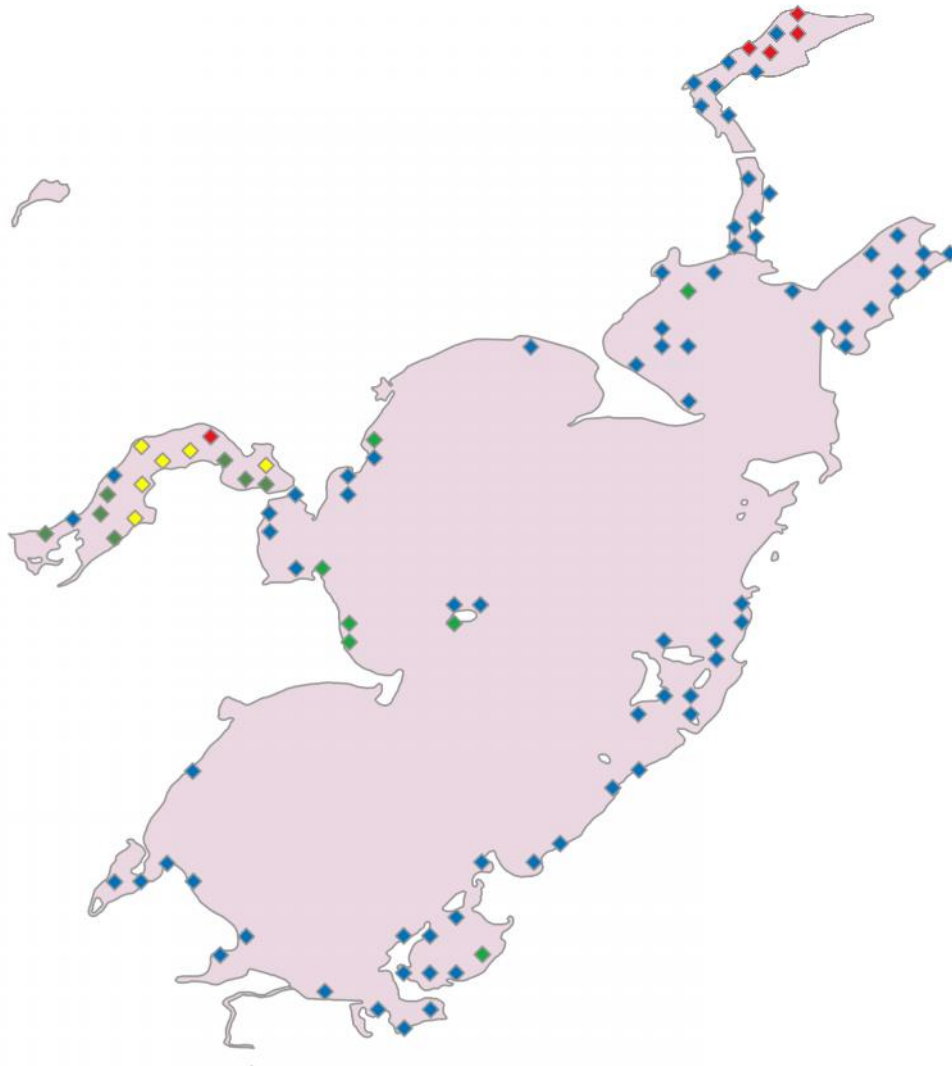


**Rake Density**

- 1 - few plants
- 2 - rake full/single layer of plants
- 3 - rake covered w/plants
- v - visual

Figure 5-12

**Solberg Lake  
Vegetation Survey 2011  
*Nymphaea odorata*  
White water lily**

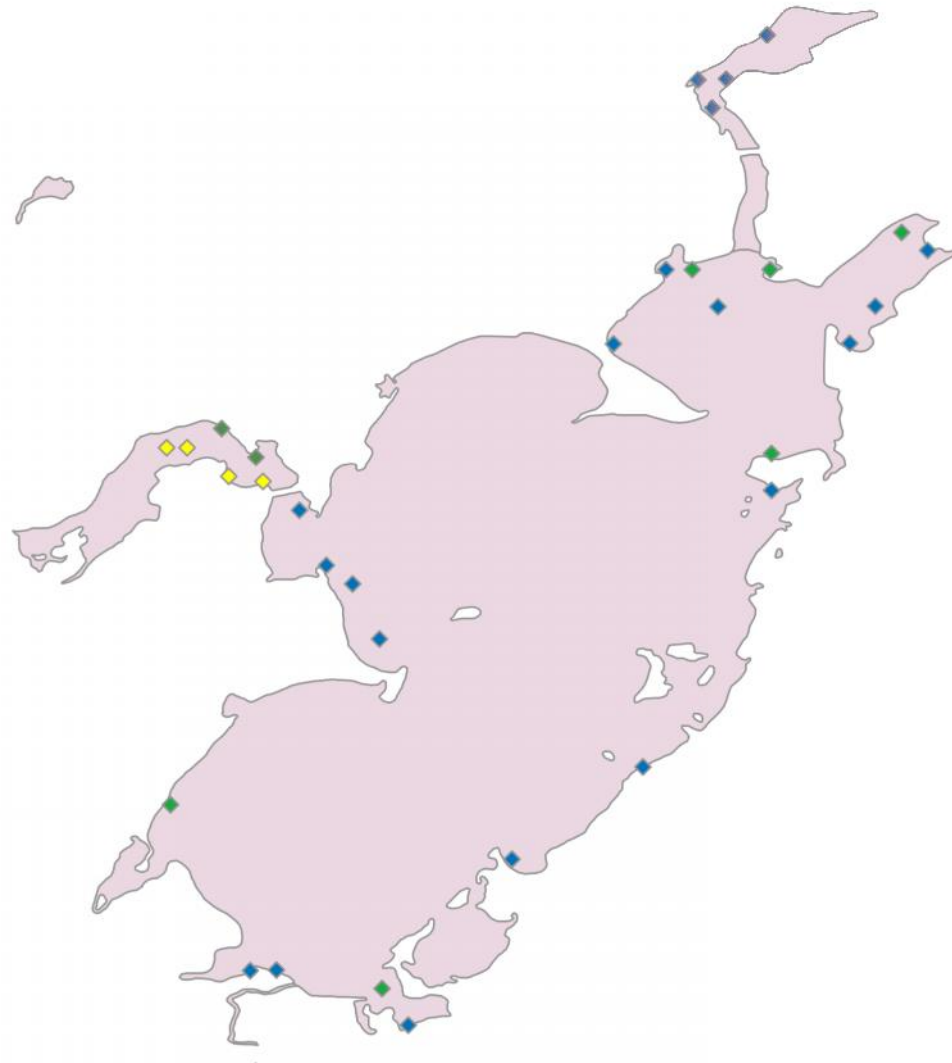


**Rake Density**

- 1 - few plants
- 2 - rake full/single layer of plants
- 3 - rake covered w/plants
- v - visual

Figure 5-13

**Solberg Lake  
Vegetation Survey 2011  
Potamogeton amplifolius  
Large-leaf pondweed**



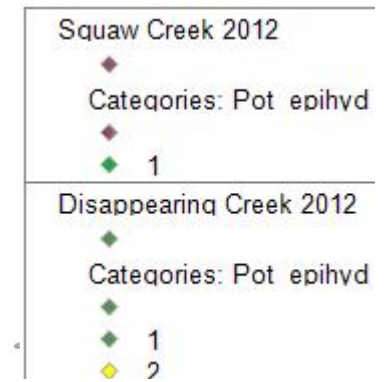
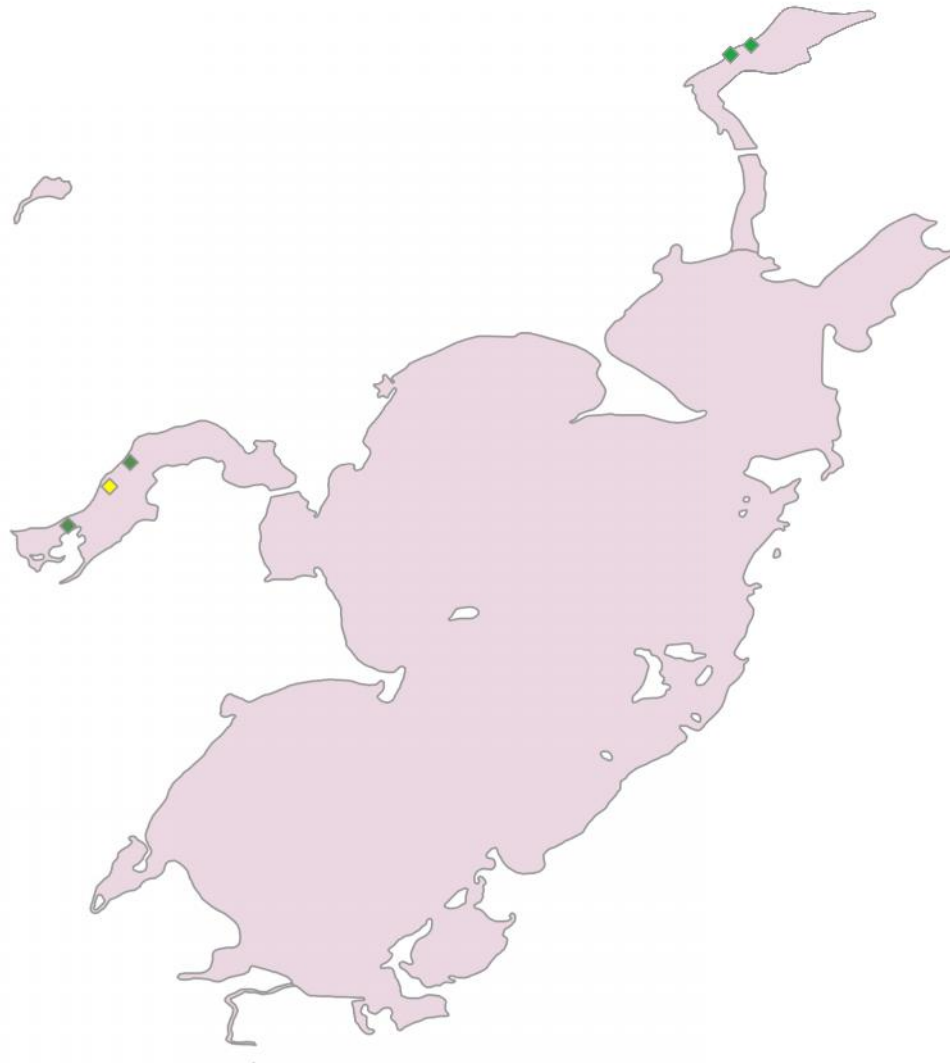
**Rake Density**

- 1 - few plants
- 2 - rake full/single layer of plants
- 3 - rake covered w/plants
- v - visual



Figure 5-14

**Solberg Lake  
Vegetation Survey 2011  
Potamogeton epihydrus  
Ribbon-leaf pondweed**

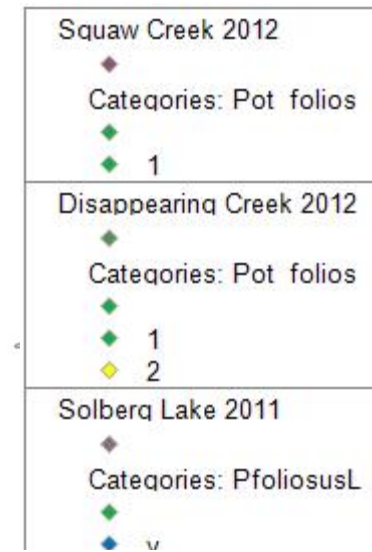
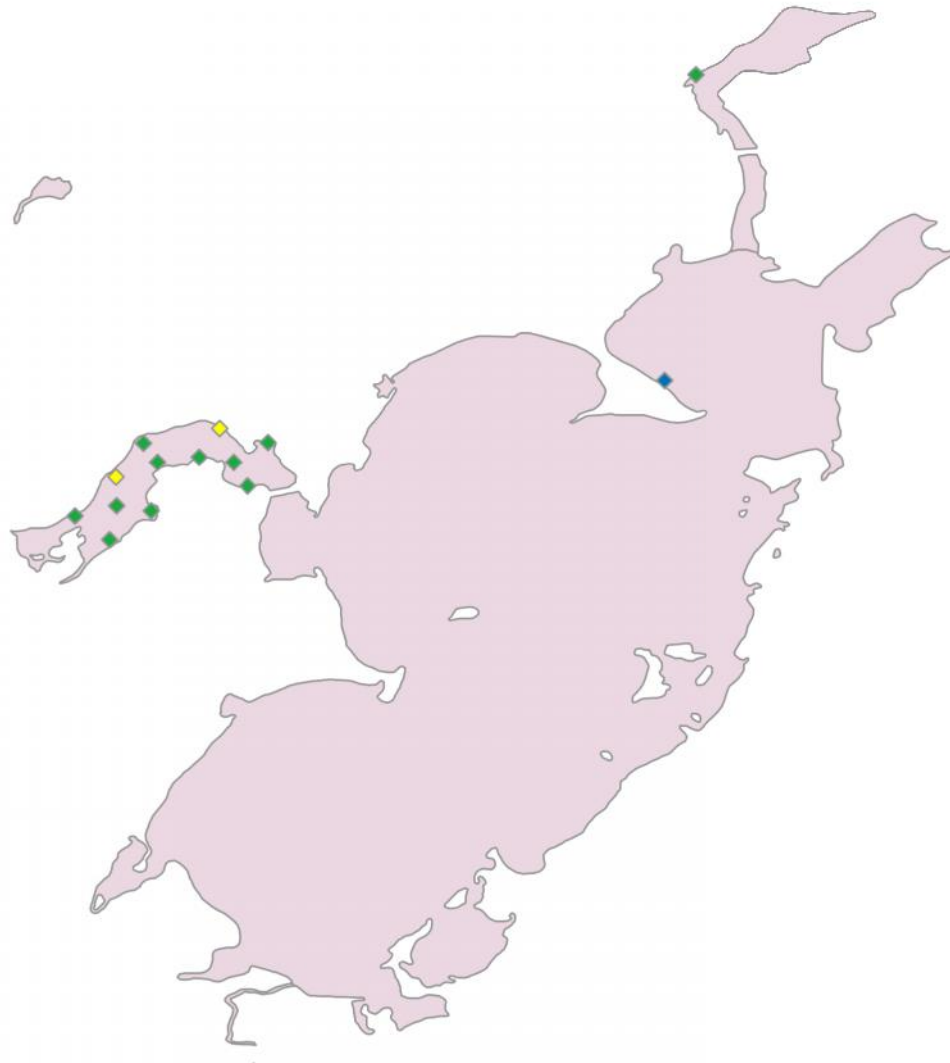


**Rake Density**

- 1 - few plants
- 2 - rake full/single layer of plants
- 3 - rake covered w/plants

Figure 5-15

**Solberg Lake  
Vegetation Survey 2011  
Potamogeton foliosus  
Leafy pondweed**



**Rake Density**

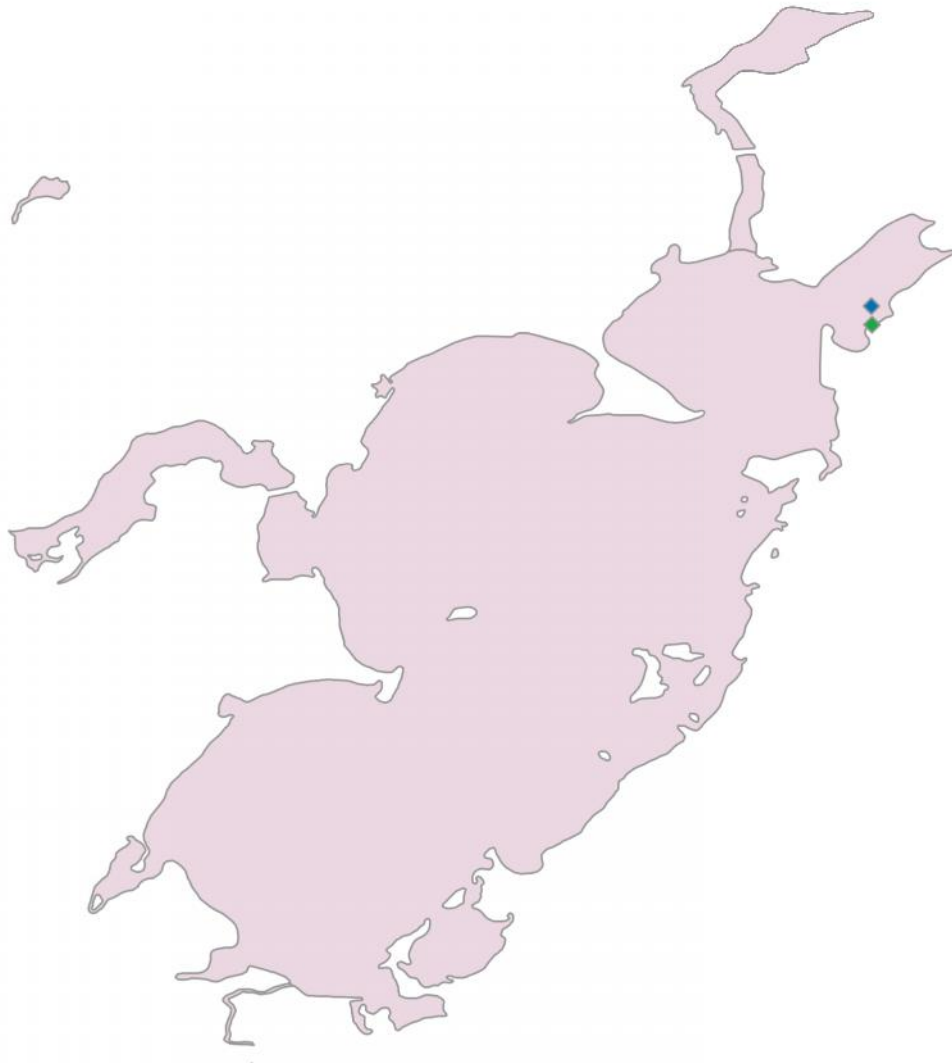
- 1 - few plants
- 2 - rake full/single layer of plants
- 3 - rake covered w/plants
- v - visual



Figure 5-16



**Solberg Lake  
Vegetation Survey 2011  
Potamogeton gramineus  
Variable pondweed**

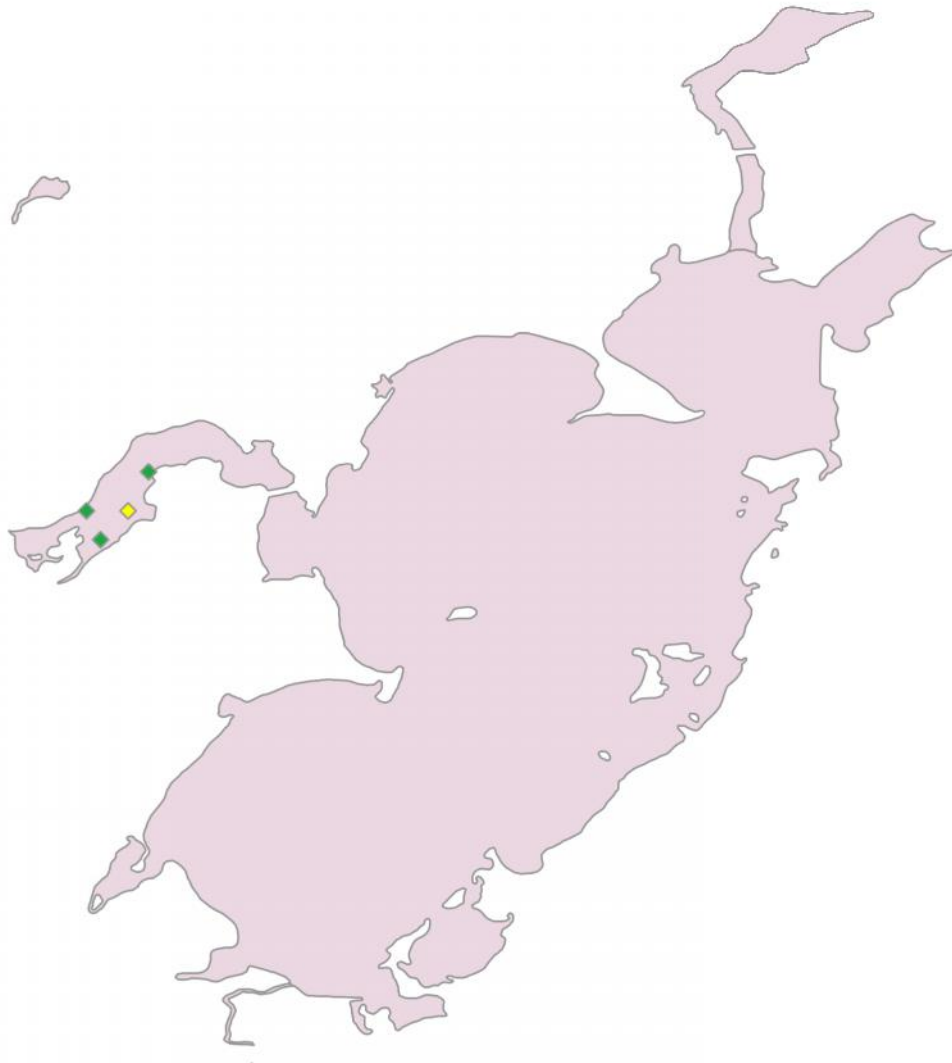


**Rake Density**

- 1 - few plants
- 2 - rake full/single layer of plants
- 3 - rake covered w/plants
- v - visual

Figure 5-17

**Solberg Lake  
Vegetation Survey 2011  
Potamogeton natans  
Floating-leaf pondweed**



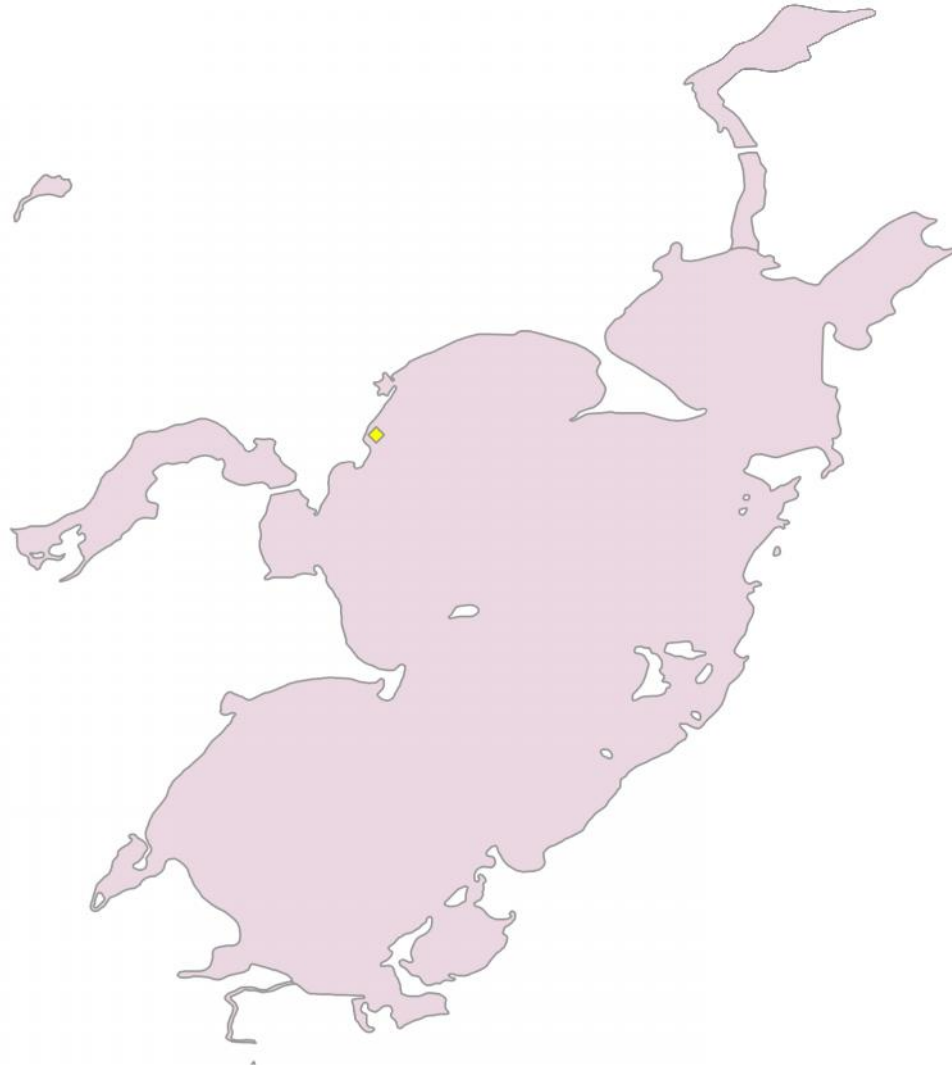
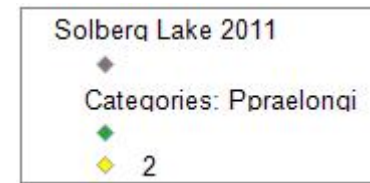
**Rake Density**

- 1 - few plants
- 2 - rake full/single layer of plants
- 3 - rake covered w/plants



Figure 5-18

**Solberg Lake  
Vegetation Survey 2011  
Potamogeton praelongis  
White-stem pondweed**



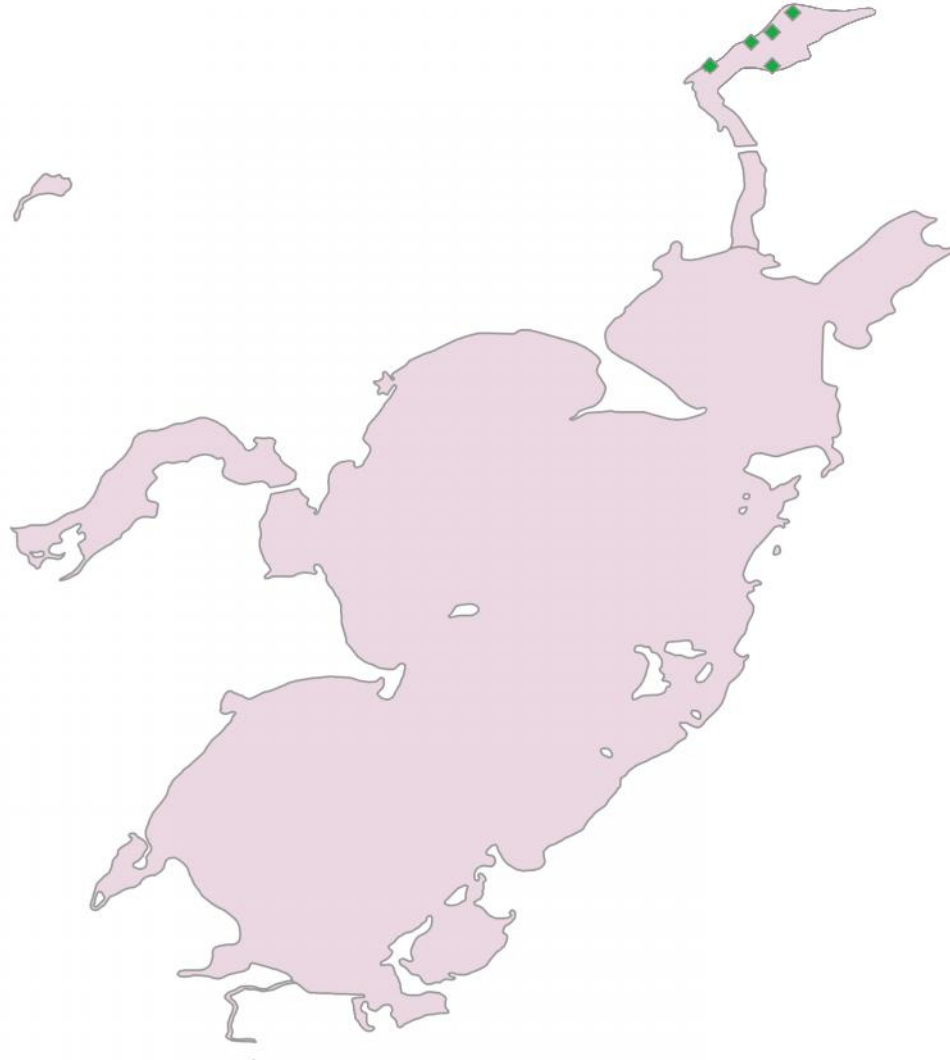
**Rake Density**

- 1 - few plants
- 2 - rake full/single layer of plants
- 3 - rake covered w/plants



Figure 5-19

**Solberg Lake  
Vegetation Survey 2011  
Potamogeton pusillus  
Small pondweed**



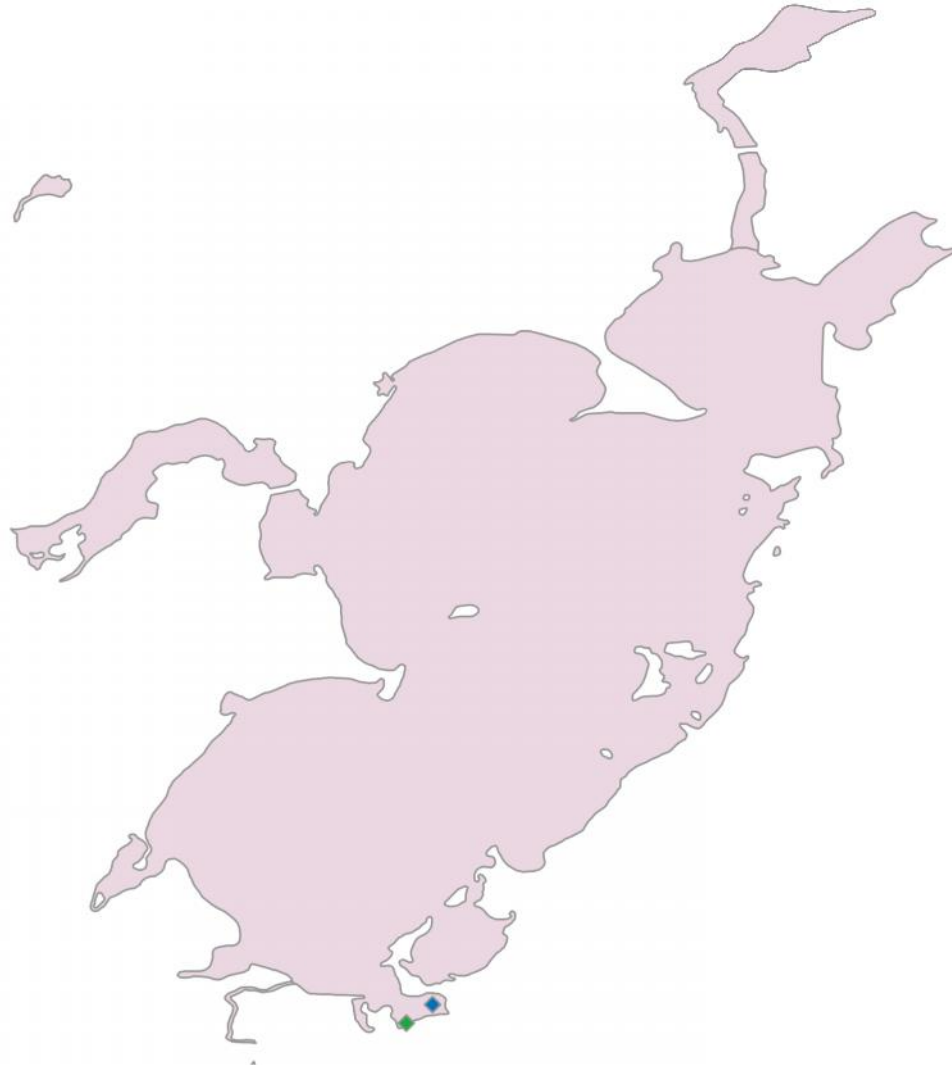
**Rake Density**

- 1 - few plants
- 2 - rake full/single layer of plants
- 3 - rake covered w/plants



Figure 5-20

**Solberg Lake  
Vegetation Survey 2011  
Potamogeton robbinsii  
Fern pondweed**



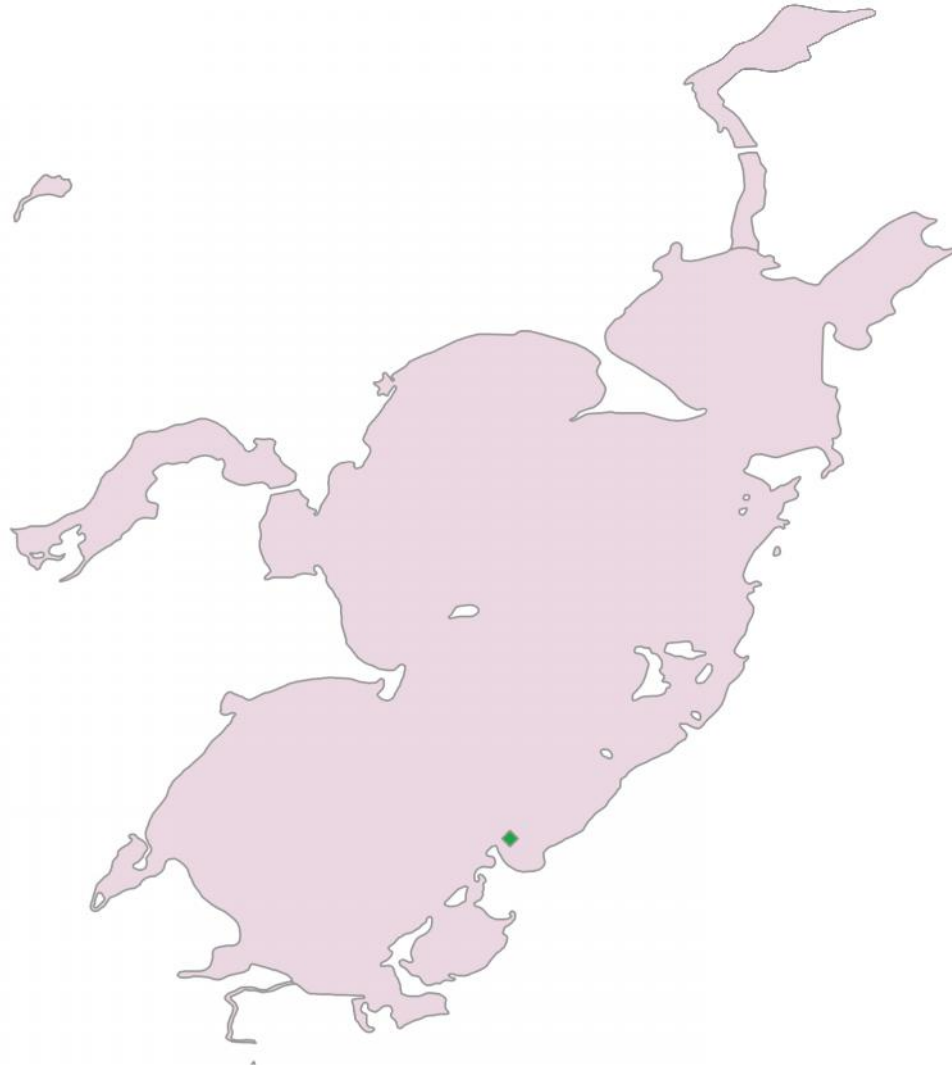
**Rake Density**

- 1 - few plants
- 2 - rake full/single layer of plants
- 3 - rake covered w/plants



Figure 5-21

**Solberg Lake  
Vegetation Survey 2011  
Potamogeton zosteriformis  
Flat-stem pondweed**



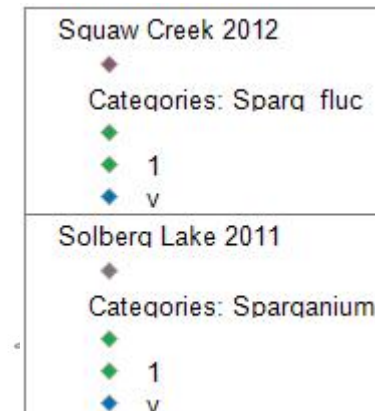
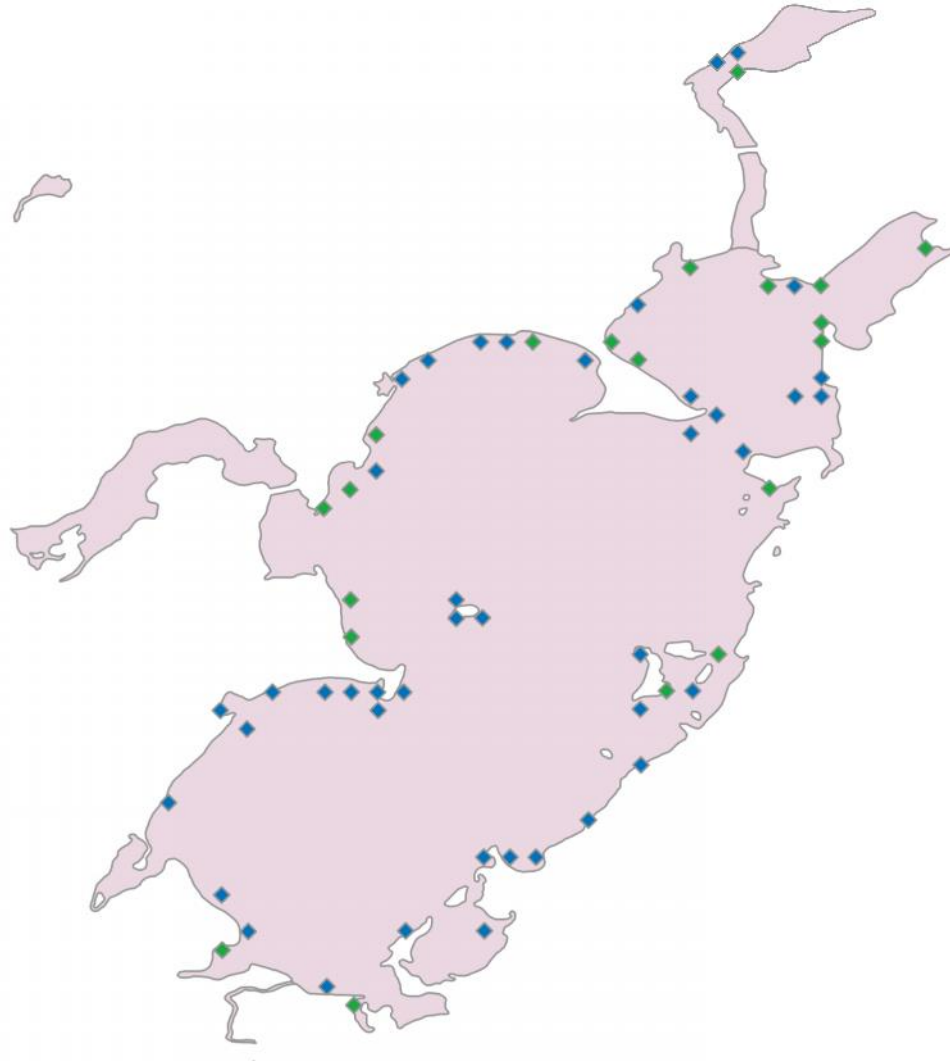
**Rake Density**

- 1 - few plants
- 2 - rake full/single layer of plants
- 3 - rake covered w/plants
- v - visual



Figure 5-22

**Solberg Lake  
Vegetation Survey 2011  
Sparganium fluctuans  
Floating-leaf bur-reed**



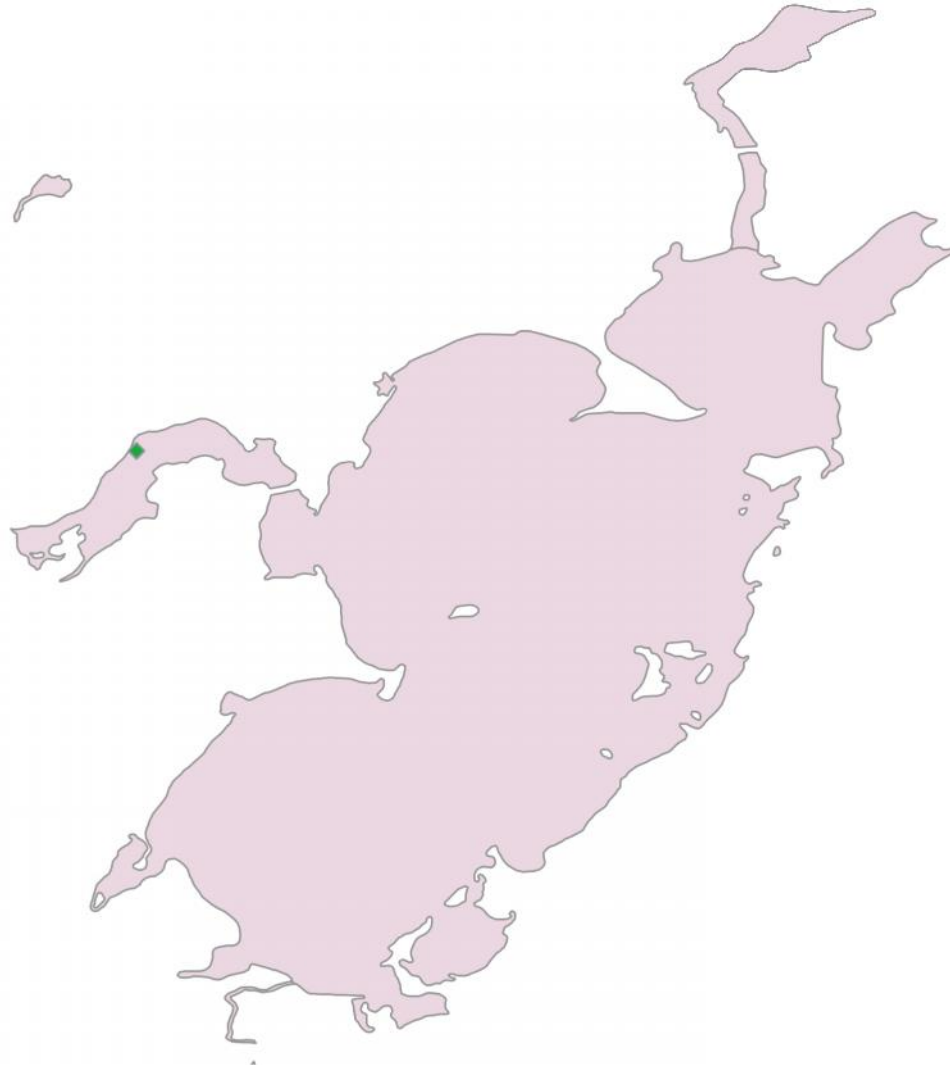
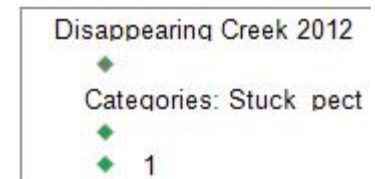
**Rake Density**

- 1 - few plants
- 2 - rake full/single layer of plants
- 3 - rake covered w/plants
- v - visual



Figure 5-23

**Solberg Lake  
Vegetation Survey 2011  
*Stuckenia pectinata*  
Sago pondweed**



**Rake Density**

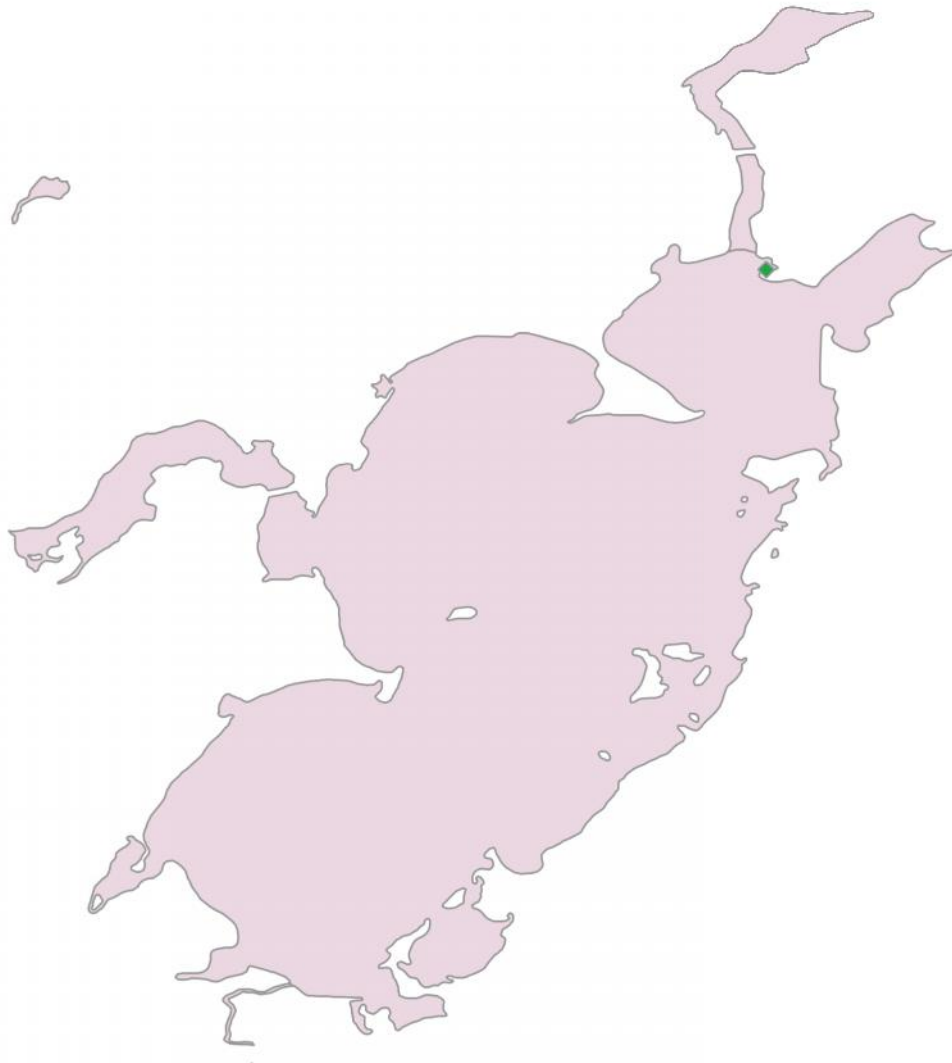
- 1 - few plants
- 2 - rake full/single layer of plants
- 3 - rake covered w/plants



Figure 5-24



**Solberg Lake  
Vegetation Survey 2011  
Utricularia minor  
Small bladderwort**



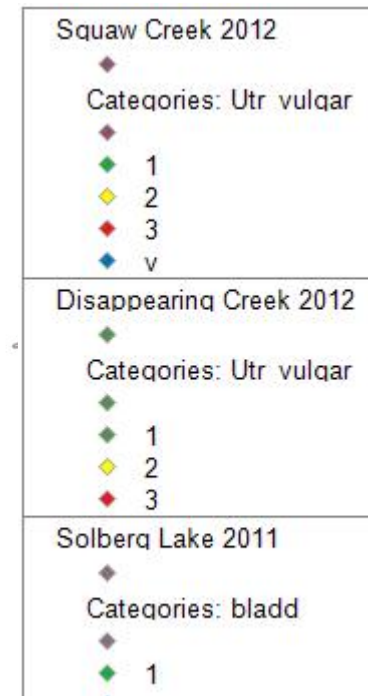
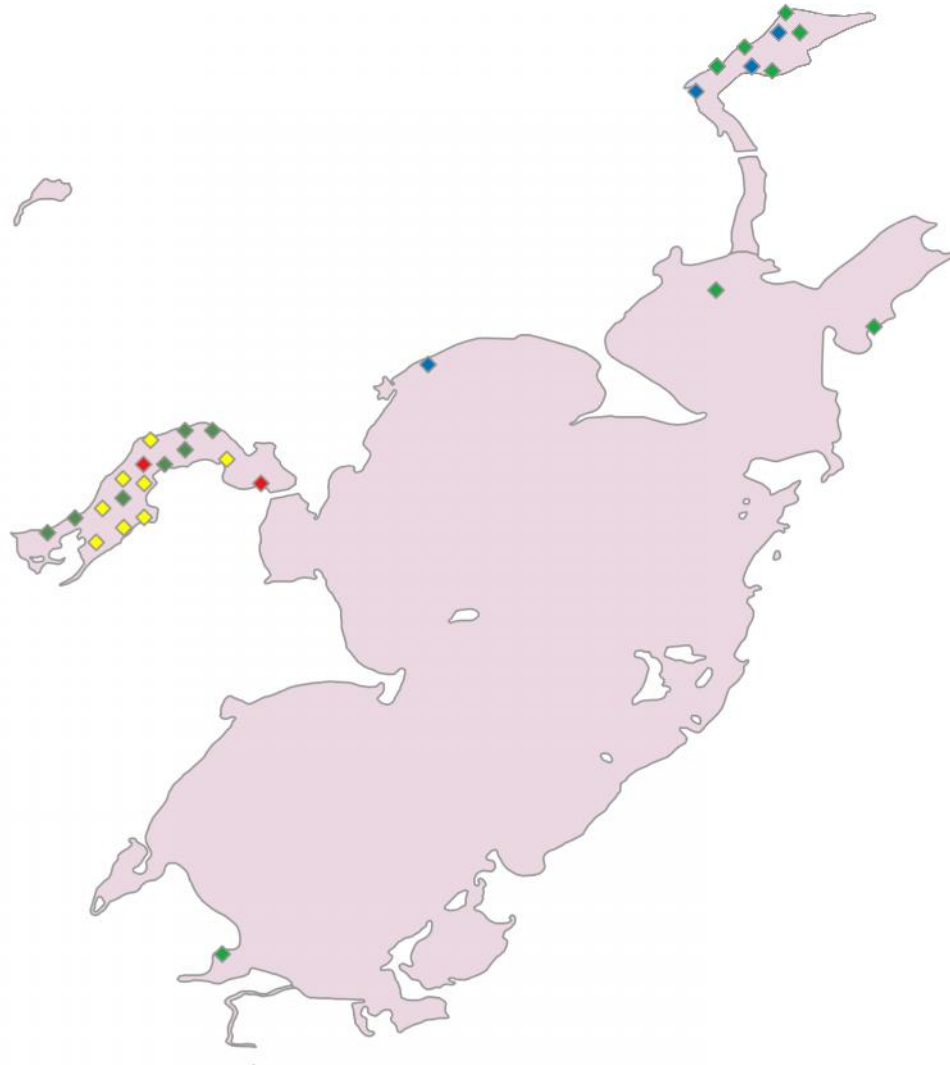
**Rake Density**

- 1 - few plants
- 2 - rake full/single layer of plants
- 3 - rake covered w/plants



Figure 5-25

**Solberg Lake  
Vegetation Survey 2011  
*Utricularia vulgaris*  
Common bladderwort**

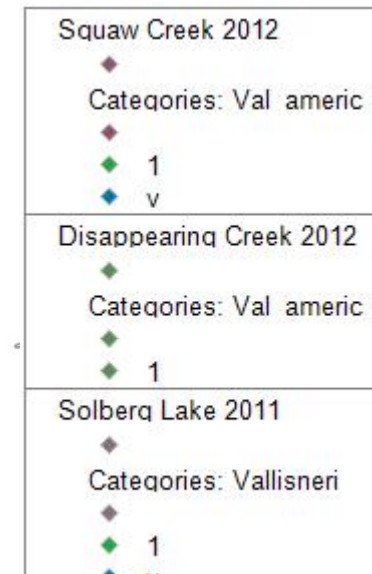
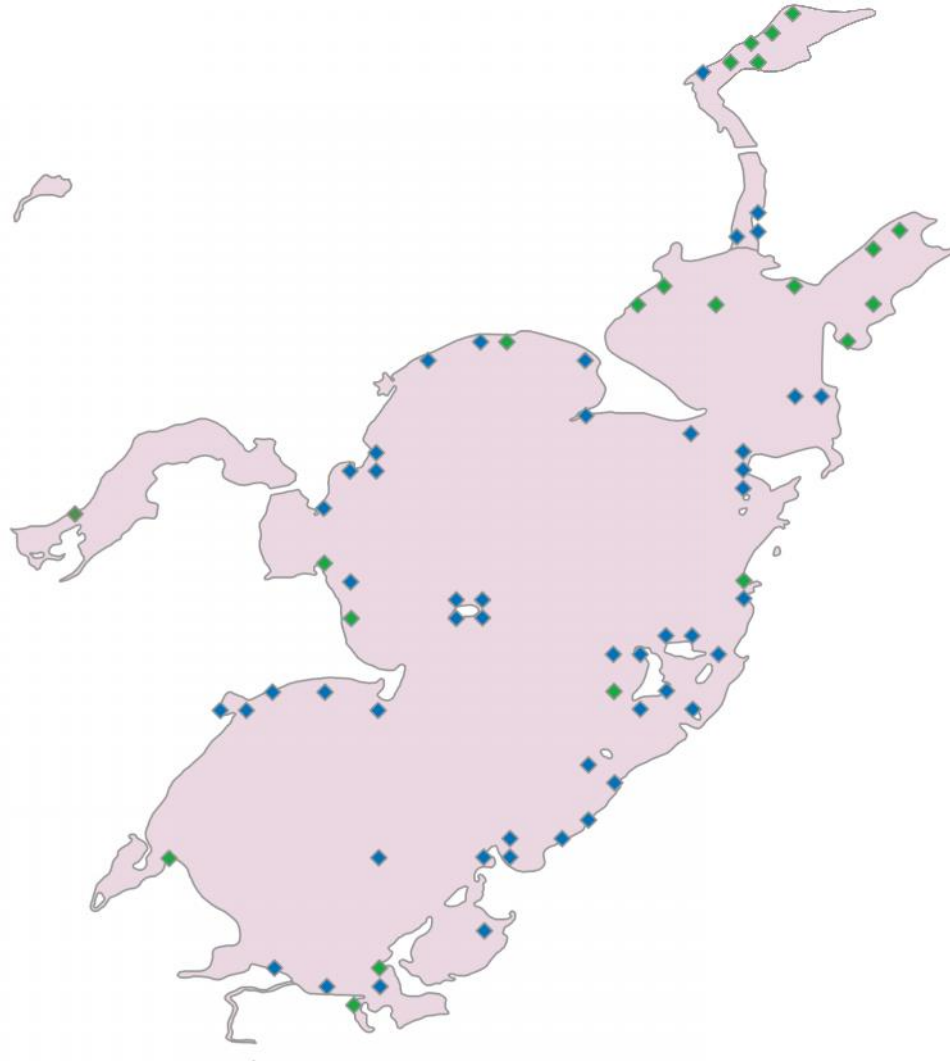


**Rake Density**

- 1 - few plants
- 2 - rake full/single layer of plants
- 3 - rake covered w/plants
- v - visual

Figure 5-26

**Solberg Lake  
Vegetation Survey 2011  
*Vallisneria americana*  
Wild celery**



**Rake Density**

- 1 - few plants
- 2 - rake full/single layer of plants
- 3 - rake covered w/plants
- v - visual



Figure 5-27